



Camps Road, Haverhill, CB9 8JY

CHEFFINS

Camps Road

Haverhill,
CB9 8JY

An updated and spacious two bedroom ground floor apartment located close to the town centre. The property benefits from a fitted kitchen, and gated parking area providing 1 allocated parking space. Available 13th February 2026.

- Two Bedrooms
- Lounge
- Kitchen
- Ground Floor
- Council Tax Band B
- EPC Rating C



£950 PCM



**Entrance Hall**

Built in airing cupboard, doors to:

Lounge / Dining Room

Two windows to the front, storage heater, open plan to:

Kitchen

Fitted with a range of eye and base units with roll top worksurfaces, sink unit with, built in oven and hob with extractor fan above, part tiled walls, space for appliances.

Bedroom 1

Window to rear, panel heater.

Bedroom 2

Window to rear, panel heater.

Bathroom

Fitted with three piece suite comprising a panelled bath with shower over, low level WC, pedestal handbasin with tiled splashbacks, extractor fan, wall mounted light with shaver point.

Parking Space

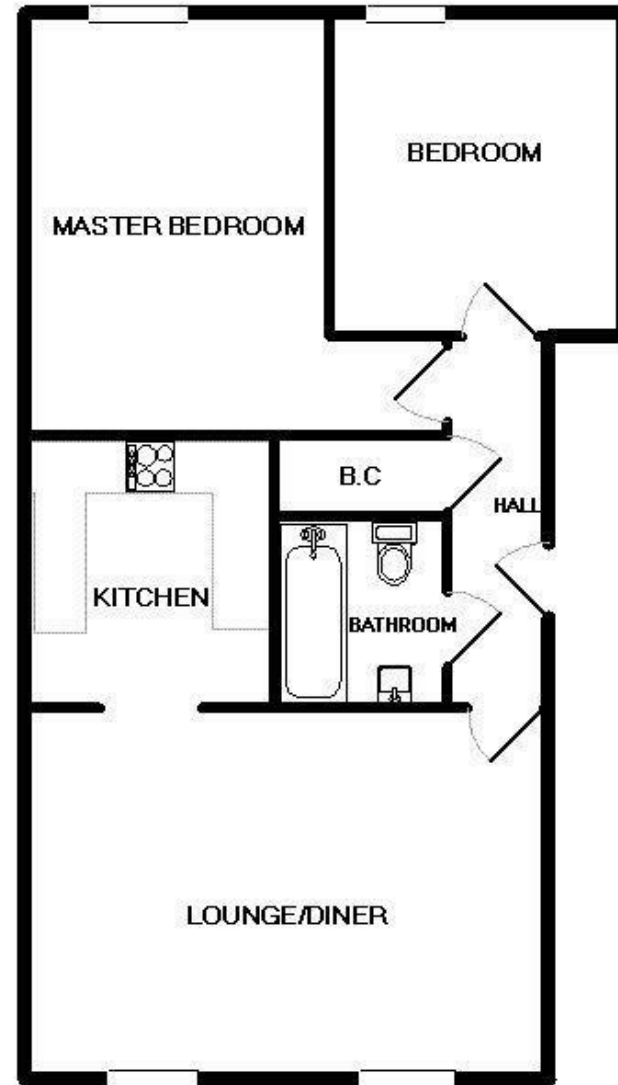
The property has the benefit of allocated parking, within a secure gated parking area to the rear of the building.

Material Information

For more information on this property please refer to the Material Information brochure on our Website

Holding Deposit

£219.00



Energy Efficiency Rating

	Current	Potential
<i>Very energy efficient - lower running costs</i>		
(92 plus) A		
(81-91) B		
(69-80) C	73	79
(55-68) D		
(39-54) E		
(21-38) F		
(1-20) G		
<i>Not energy efficient - higher running costs</i>		
England & Wales	EU Directive 2002/91/EC	

Agents note:

For more information on this property please refer to the Material Information Brochure on our website.

Cavendish House, 27a High Street, Haverhill, Suffolk, CB9 8AD | 01440 707076 | cheffins.co.uk

IMPORTANT: we would like to inform prospective purchasers that these sales particulars have been prepared as a general guide only. A detailed survey has not been carried out, nor the services, appliances and fittings tested. Room sizes should not be relied upon for furnishing purposes and are approximate. If floor plans are included, they are for guidance only and illustration purposes only and may not be to scale. If there are any important matters likely to affect your decision to buy, please contact us before viewing the property.

